

# TWO ADJACENT INDUSTRIAL CONDOS FOR SALE

2535 W Winton Ave, Suites 4B & 4C  
Hayward, CA



**SALE PRICE**  
\$830,000  
(\$360/SF)



**BUILDING SIZE**  
± 1,152 SF each  
± 2,304 SF Total



**LOT SIZE**  
± 2,895 SF each  
or ± 5,790 SF  
(± 0.133 acres)



**APN**  
438-100-36 (4B)  
438-100-37 (4C)



**YEAR BUILT**  
1981  
Renovated 2025



**ZONING**  
Industrial Park  
(IP)

**THE IVY GROUP**  
Commercial Properties, Above & Beyond

**TIM VI TRAN, SIOR, CCIM**

tim@theivygroup.com | 510.213.8883  
CA DRE #01784630

**DIEGO CERVANTES**

diego@theivygroup.com | 510.856.8238  
CA DRE #02245887

This is a confidential Memorandum intended solely for your limited use and benefit in determining whether you desire to express further interest in the acquisition of the property located at 2535 W Winton Ave, Suites 4B & 4C, Hayward, CA (“Property”).

This Memorandum contains selected information pertaining to the Property and is unintended to be all-inclusive or to contain all or part of the information which prospective investors may require to evaluate a purchase of real property. All financial projections and information are provided for general reference purposes only and are based on assumptions relating to the general economy, market conditions, competition and other factors beyond the control of the Owner and The Ivy Group (“TIG”). Therefore, all projections, assumptions and other information provided and made herein are subject to material variation. All references to acreages, square footages, and other measurements are approximations. Additional information and an opportunity to inspect the Property will be made available to interested and qualified prospective purchasers. In this Memorandum, certain documents, including leases and other materials, are described in summary form.

These summaries do not purport to be complete nor necessarily accurate descriptions of the full agreements referenced. Interested parties are expected to review all such summaries and other documents of whatever nature independently and not rely on the contents of this Memorandum in any manner.

Neither TIG nor any of their respective directors, officers, or representatives make any representation or warranty, expressed or implied, as to the accuracy or completeness of this Memorandum or any of its contents, and no legal commitment or obligation shall arise by reason of your receipt of this Memorandum or use of its contents; and you are to rely solely on your investigations and inspections of the Property in evaluating a possible purchase of the real property.

The Owners expressly reserve the right, at its sole discretion, to reject any or all expressions of interest or offers to purchase the Property, and/or to terminate discussions with any entity at any time with or without notice which may arise as a result of review of this Memorandum. The Owners shall have no legal commitment or obligation to any entity reviewing this Memorandum or making an offer to purchase the Property unless and until written agreement(s) for the purchase of the Property have been fully executed, delivered and approved by the Owners and any conditions to the Owners’ obligations therein have been satisfied or waived.

By receipt of this Memorandum, you agree that this Memorandum and its contents are of a confidential nature, that you will hold and treat it in the strictest confidence and that you will not disclose this Memorandum or any of its contents to any other entity without the prior written authorization of the Owners or TIG. You also agree that you will not use this Memorandum or any of its contents in any manner detrimental to the interest of the Owners or TIG.

### PRIME INDUSTRIAL CONDOS FOR SALE – WEST WINTON BUSINESS PARK, HAYWARD, CA

The Ivy Group is proud to present a rare opportunity to acquire two adjacent industrial condominiums in the highly desirable West Winton Business Park in Hayward, CA.

Perfectly positioned with immediate access to I-880 via Winton Avenue, these versatile units are ideal for a wide range of users — whether you're launching a startup, scaling operations, or seeking a strategic Bay Area location for warehousing and office functions.

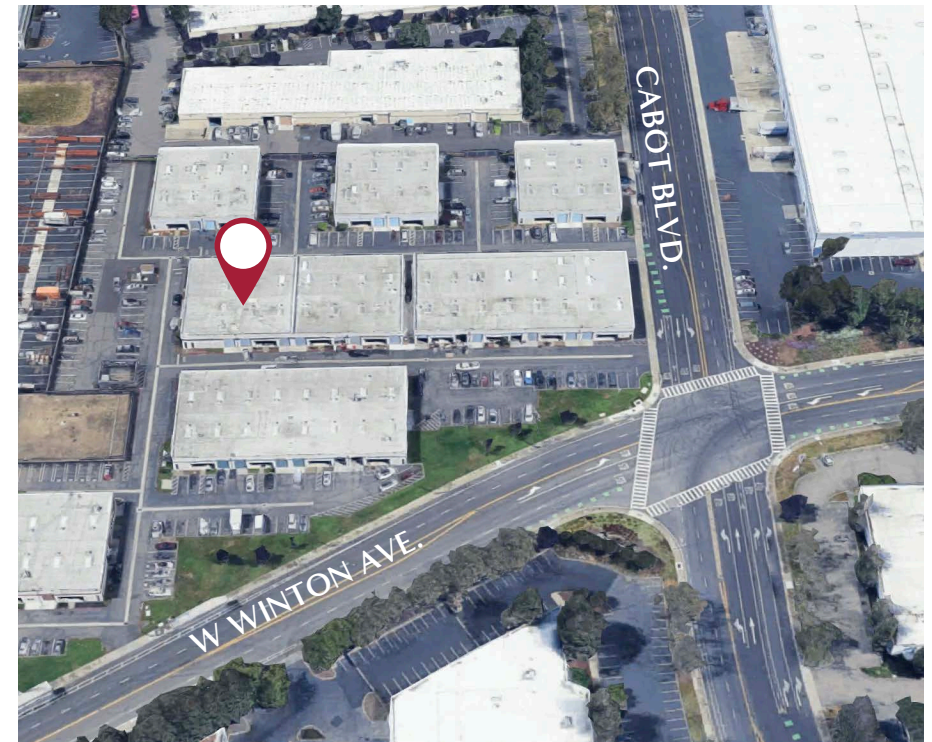
#### KEY FEATURES:

- » Two adjoining units sold together
- » Individually metered for electric
- » Delivered vacant at close of escrow
- » Excellent location for logistics, light industrial, or mixed office/warehouse use
- » SBA financing available – qualified buyers may secure the property with as little as 10% down

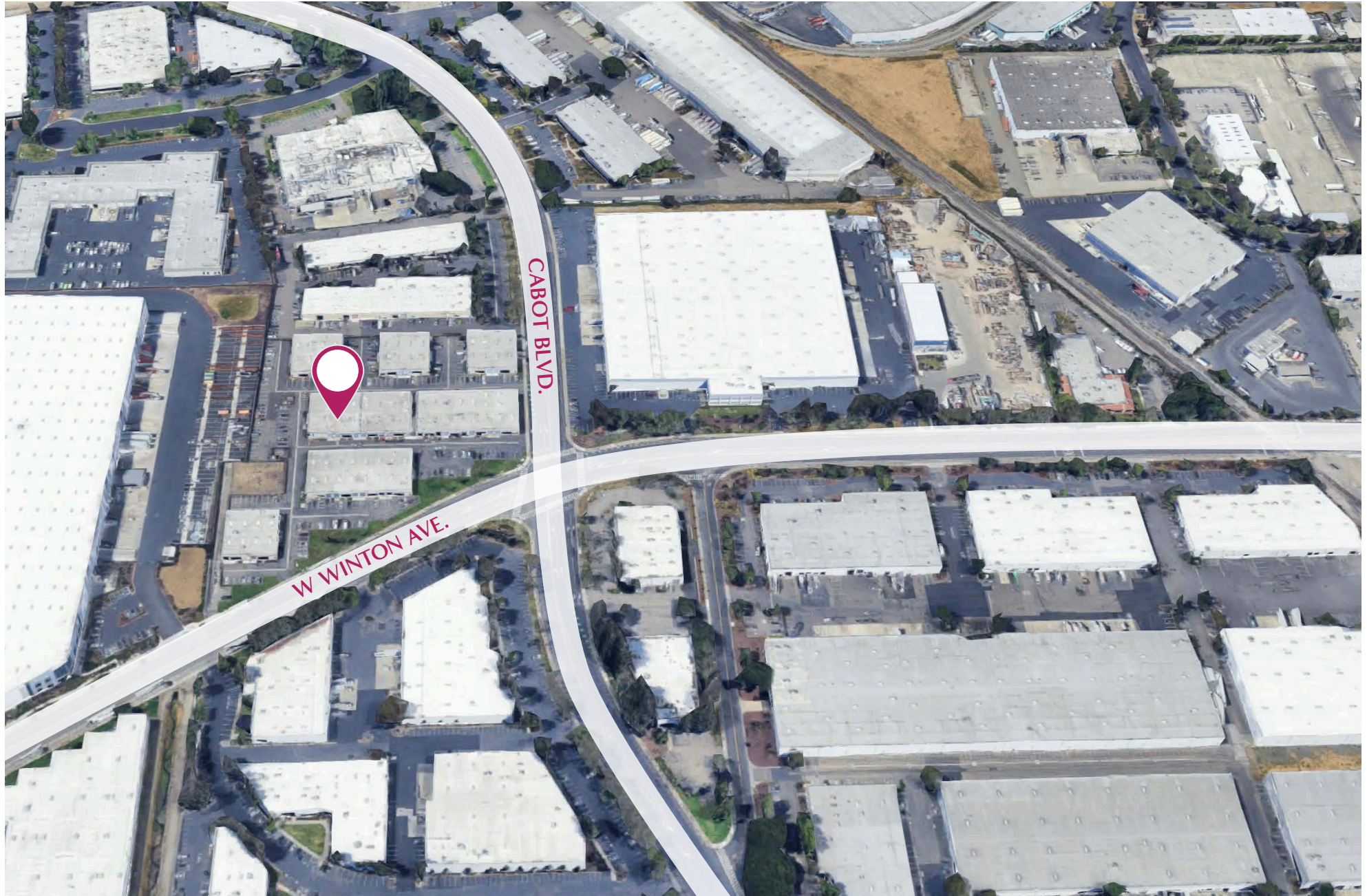
Whether you're an owner-user looking to control your business premises or an investor seeking quality industrial assets in a tight market, this is your chance to secure a foothold in one of Hayward's premier business parks.

Contact us today to schedule a tour or request additional details.

<b>Building Size</b>	Two units ± 1,152 SF each unit Total ± 2,304 SF
<b>Lot Size</b>	Two lots ± 2,895 SF each or ± 5,790 SF SF (± 0.066 acres) per unit
<b>Zoning</b>	Industrial Park (IP)
<b>Year Built</b>	1981
<b>Power</b>	Each unit 125 A, 120/240 V, 3 Ø, total 250 A (buyer to verify)
<b>Loading</b>	Each unit has one grade level rollup door
<b>Parking</b>	Each unit assigned one reserved parking space
<b>APN</b>	438-100-36 (Suite 4B) 438-100-37 (Suite 4C)













# AMENITY MAP

TWO ADJACENT INDUSTRIAL  
CONDOS  
FOR SALE





# CONTACT EXCLUSIVE AGENTS FOR DETAILS AND TOUR

**TIM VI TRAN, SIOR, CCIM**

tim@theivygroup.com | 510.213.8883  
CA DRE #01784630

**DIEGO CERVANTES**

diego@theivygroup.com | 510.856.8238  
CA DRE #02245887



**THE IVY GROUP**  
Commercial Properties, Above & Beyond

975 Corporate Way | Fremont, CA 94539

Acquisition | Disposition | Leasing