

OFFICE / WAREHOUSE CONDO

FOR LEASE

2726 Bayview Dr.
Fremont, CA



PRICE
\$1.70/SF NNN
(\$0.58/SF)



BUILDING SIZE
± 3,083 SF



LOT SIZE
± 414,168.48 SF
(± 9.508 acres)



YEAR BUILT
2008



LAYOUT
50% office
50% warehouse



APN
519-1739-26

THE IVY GROUP

Commercial Properties, Above & Beyond

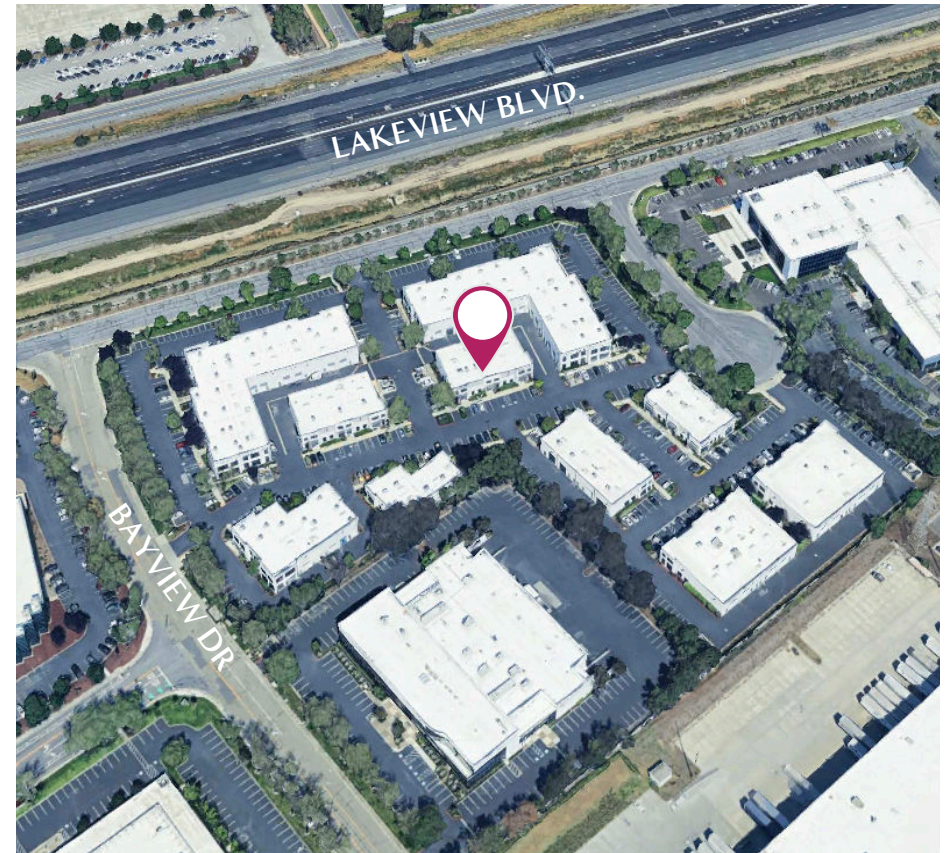
TIM VI TRAN, SIOR, CCIM

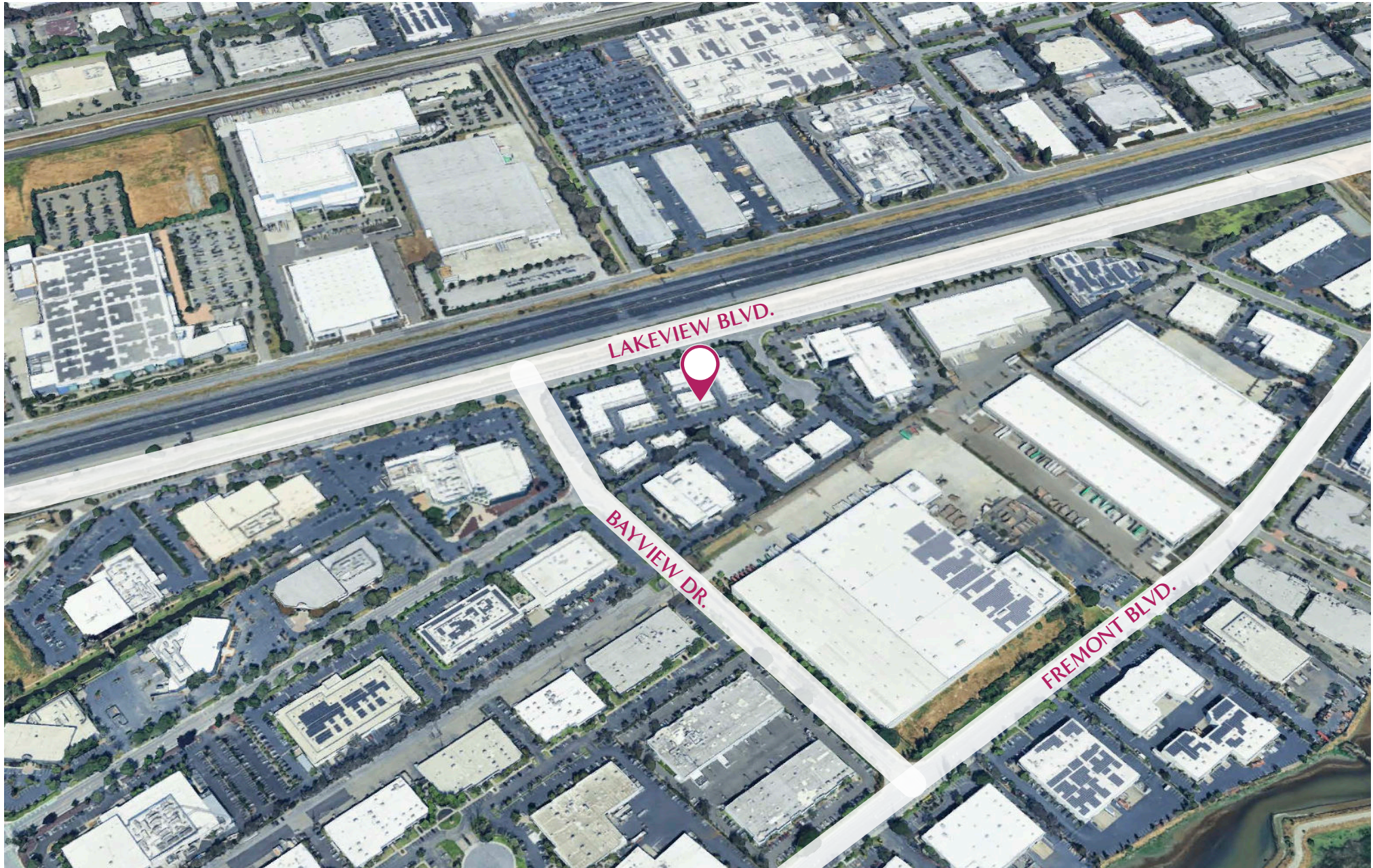
tim@theivygroup.com | 510.213.8883
CA DRE #01784630

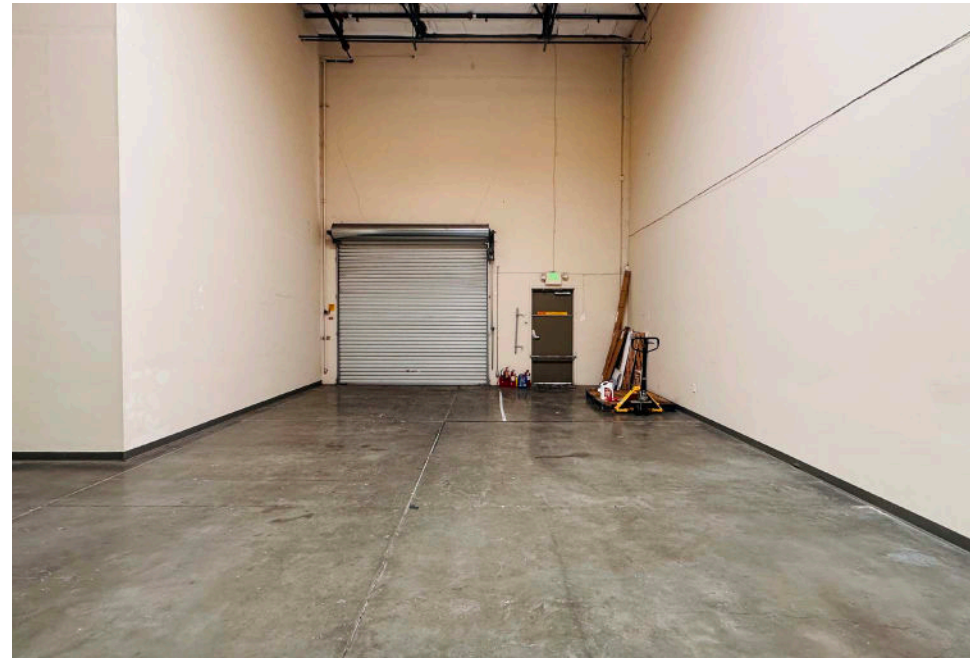
The Ivy Group is excited to offer a prime office/warehouse condominium for lease in the prestigious Fremont Tech Center. Ideally located with exceptional access to major freeways, this property provides an unbeatable combination of convenience and visibility. Surrounded by top-tier amenities, it offers a turnkey solution for established businesses looking to expand and thrive in a high-demand area.

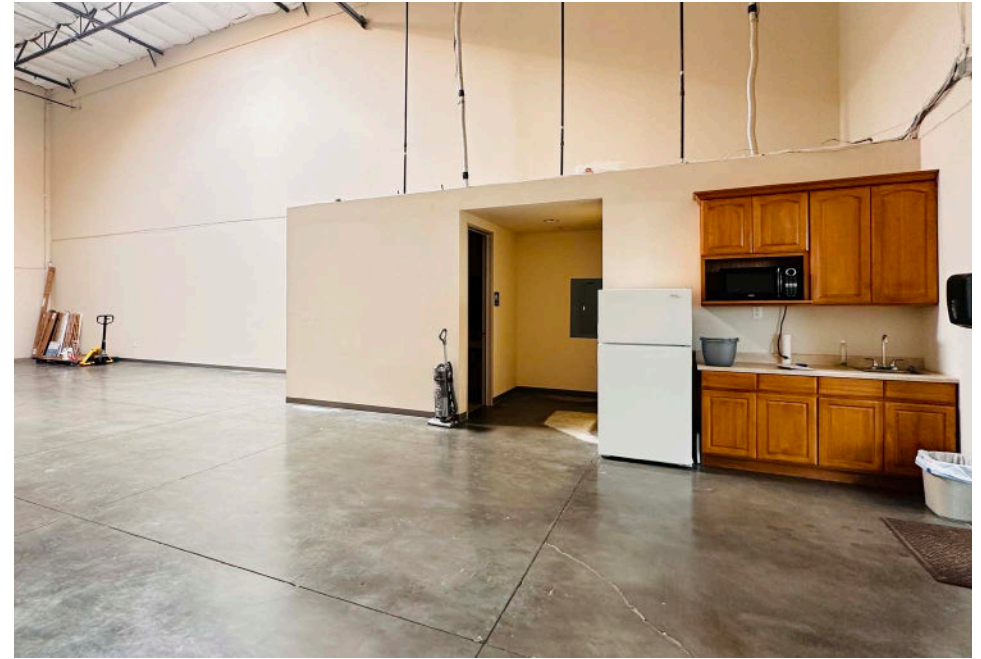
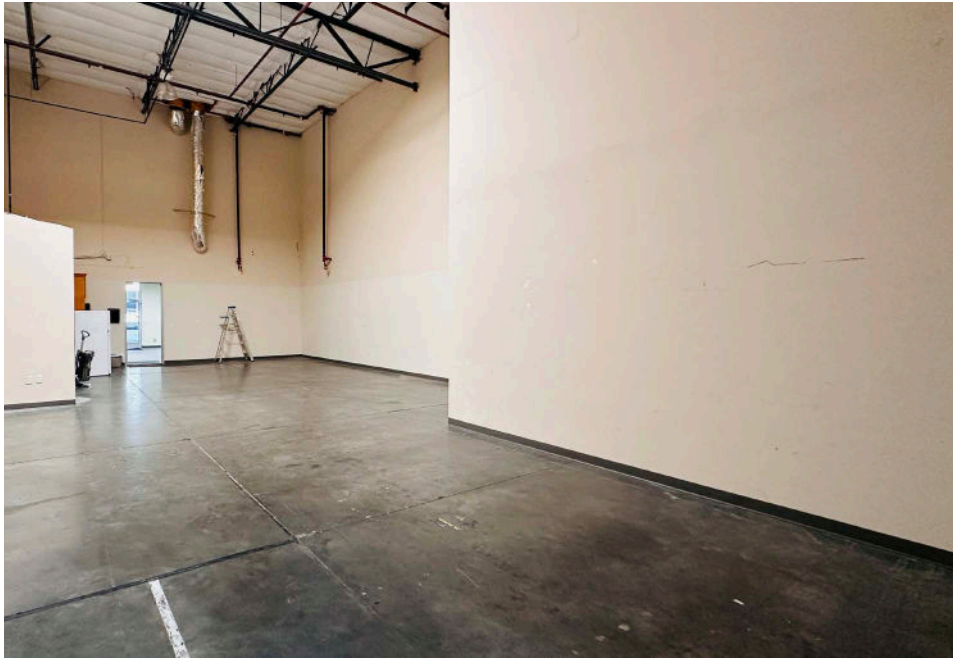
Zoned Industrial Tech (IT), this versatile space is perfect for a wide range of business operations, making it an ideal choice for financially strong and growth-oriented tenants. Ample onsite parking ensures ease of access for employees and clients alike. Opportunities like this are rare and in high demand—take advantage of this premium space to elevate your business. Act now!

Building Size	± 3,083 SF
Lot Size	± 414,168.48 SF (± 9.508 acres)
APN	519-1739-26
Zoning	Industrial Tech (IT)
Location	Close to amenities
Power	225 A, 120/208 V, 3 Ø
Layout	40% office, 60% warehouse
Ceiling Height	10 FT (office) / 25 FT (warehouse)

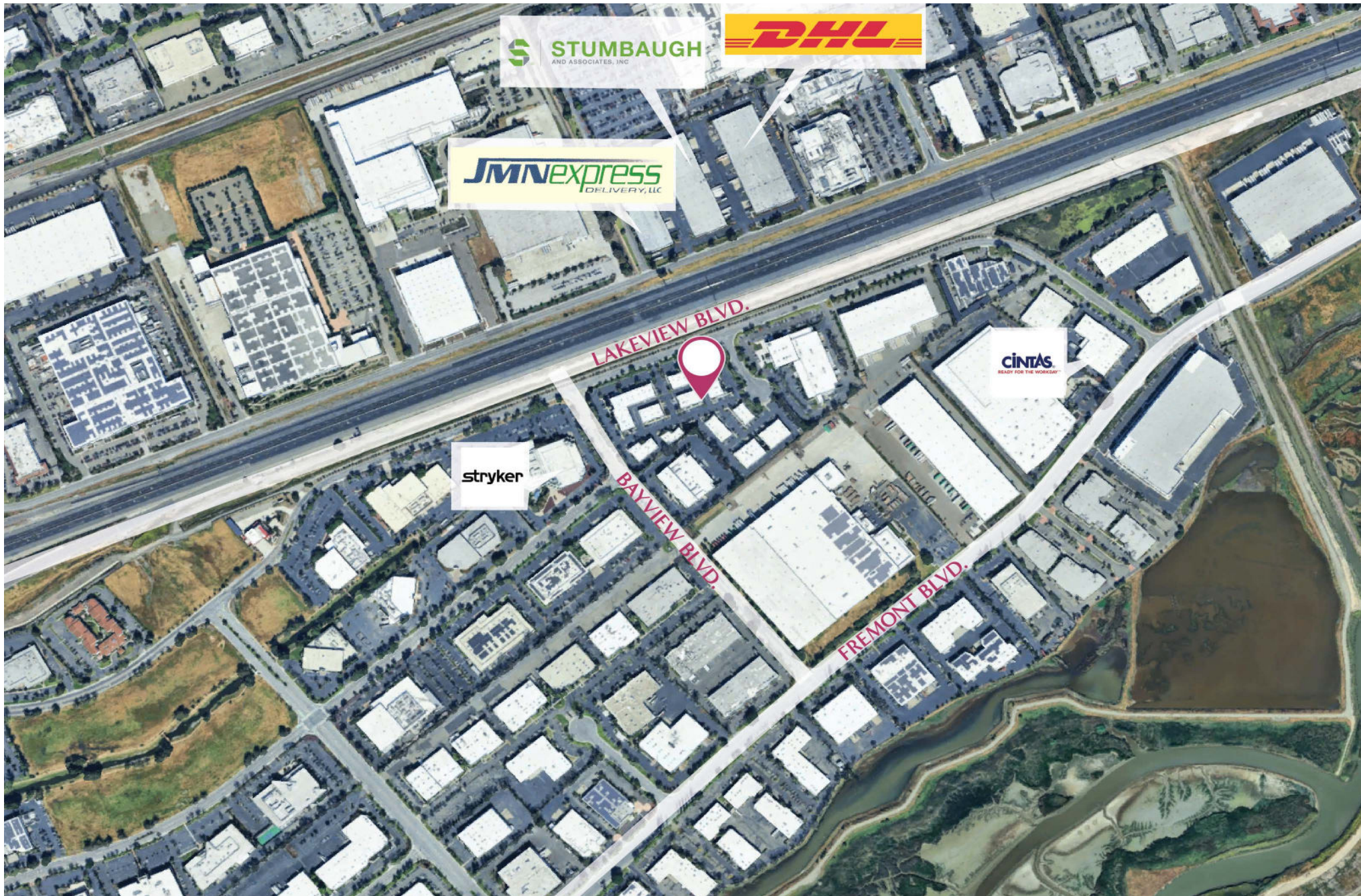












CONTACT EXCLUSIVE AGENT
FOR DETAILS AND TOUR

TIM VI TRAN, SIOR, CCIM

tim@theivygroup.com | 510.213.8883
CA DRE #01784630



THE IVY GROUP
Commercial Properties, Above & Beyond

975 Corporate Way | Fremont, CA 94539

Acquisition | Disposition | Leasing